

# THE HEALING POWER OF CREATIVITY







RIDERS ON THE SHORE, acrylic and oil on canvas, © 2002

# JUNE



**IAN DARRAGH**  
New York, New York

When creating this painting, Ian Darragh says he was influenced by his memories of horse races along the shore nearby his childhood home in Donegal, Ireland. The waiting horses and riders can be seen to represent the patience one needs to wait and marshal forces before one can constructively "take off" — to heal, to create, or to move forward — especially when one has MS. "Art is healing work, as sensible children know and sensible adults forget," he says.



SUNDAY	MONDAY	TUESDAY	WEDNESDAY	THURSDAY	FRIDAY	SATURDAY
1	2	3	4	5	6	7
8	9	10	11	12	13	14
15	16	17	18	19	20	21
22	23	24	25	26	27	28
29	30					

The Society's Professional Resource Center works in partnership with the medical community to assure quality MS healthcare.



# THE HEALING POWER OF CREATIVITY

In its continuing efforts to recognize the talents of contemporary artists who have MS, the National MS Society is pleased to present, *The Healing Power of Creativity*. This calendar includes original paintings and photographs by fifteen individuals with MS from across the country, along with their personal insights about the healing influence of creative expression. Those with MS may not be able to control the unpredictable effects of their disease, but they can control the inner world of their imagination. Journey through the seasons and learn first-hand that disability and inability are not synonymous.

The National MS Society funds more research and offers more programs for people affected by MS than any other MS organization in the world. If you know individuals with MS, have them contact their local chapters for information about FDA-approved medications that might delay or reduce future disability in many people with MS. For more information about MS and the work of the Society, please call: 1-800-FIGHT MS.

National MS Society  
733 Third Avenue, 6th floor  
New York, NY 10017-3288

Web site: [nationalmssociety.org](http://nationalmssociety.org)



NANCY DELL MITCHELL



DINA KAWER



ROBERT PAUL SAPHIER



GREG DANIELSON



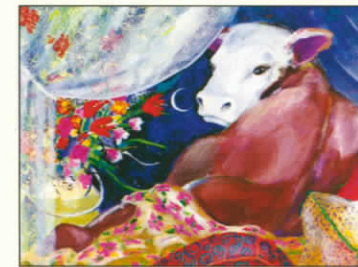
BOB NEIL



IAN DARRAGH



CAROL ES



ROBIN RICHARDS



LORNA WARDEN



JUDITH WERSHIL



GINA MINIELLI GUNKEL



THOMAS S. HINDE